

eska®

GLOVE REVOLUTION SINCE 1912

POLICE & SPECIAL FORCES



RESEARCH AND DEVELOPMENT

The operational areas and operations of the individual armies vary around the world and change over time. So do the climate zones and weather conditions. This makes the individual adaptation of operational gloves to the actual needs of the respective country and troops all the more important. In order to always meet the requirements precisely, we at ESKA work in a solution-oriented manner and in close coordination with the respective client. We are the contact for the conception and development of military gloves according to country-specific and individual requirements.

OUR 3-STEP PLAN

1

EVALUATION

From the very beginning, personal contact with the client is what counts for us. Through a intensive exchange of experience and lively communication, optimization potentials can be identified and solutions can be developed in a targeted manner.

The individual requirements of the respective customer become the focus of the discussions. Emergency forces bear immense responsibility and must have a firm grip on every situation.

The demands on protection, functionality and tactility are enormous worldwide and yet so different.

2

DEVELOPMENT

Now it's a matter of finding the right materials and cuts for the glove in question. For a combat glove, sensitivity, grip and protection are most important, while a cold-wet-finger glove is expected to provide warmth, wetness protection and robustness.

The requirements for raw materials and cut shapes are correspondingly different. Together with our innovative partners, we develop high-performance materials, individually adapted to the requirements of the respective customer.

3

TESTING

Practical and field tests now lead us step by step to exactly the product that is really needed by the armed forces in the field. We evaluate each feedback together with the client.

Depending on the complexity of the task, it may well make sense to return to step 2 and then carry out further tests.

We leave nothing to chance and pay meticulous attention to every detail.

INDIVIDUAL OPERATIONS AND REQUIREMENTS.

**DEXTERITY AND COMFORT.
FOR EVERY CHALLENGE.
FOR EVERY SITUATION.**

UNCOMPROMISED HAND PROTECTION.

„High-quality, strictly tested European raw materials and our 113 years of know-how are the basis for the manufacture of our quality products. We focus on sustainability with long product life cycles.

These quality principles correspond exactly to our DNA.“



Managing director in 4th family generation,
Paul Herbert Loos

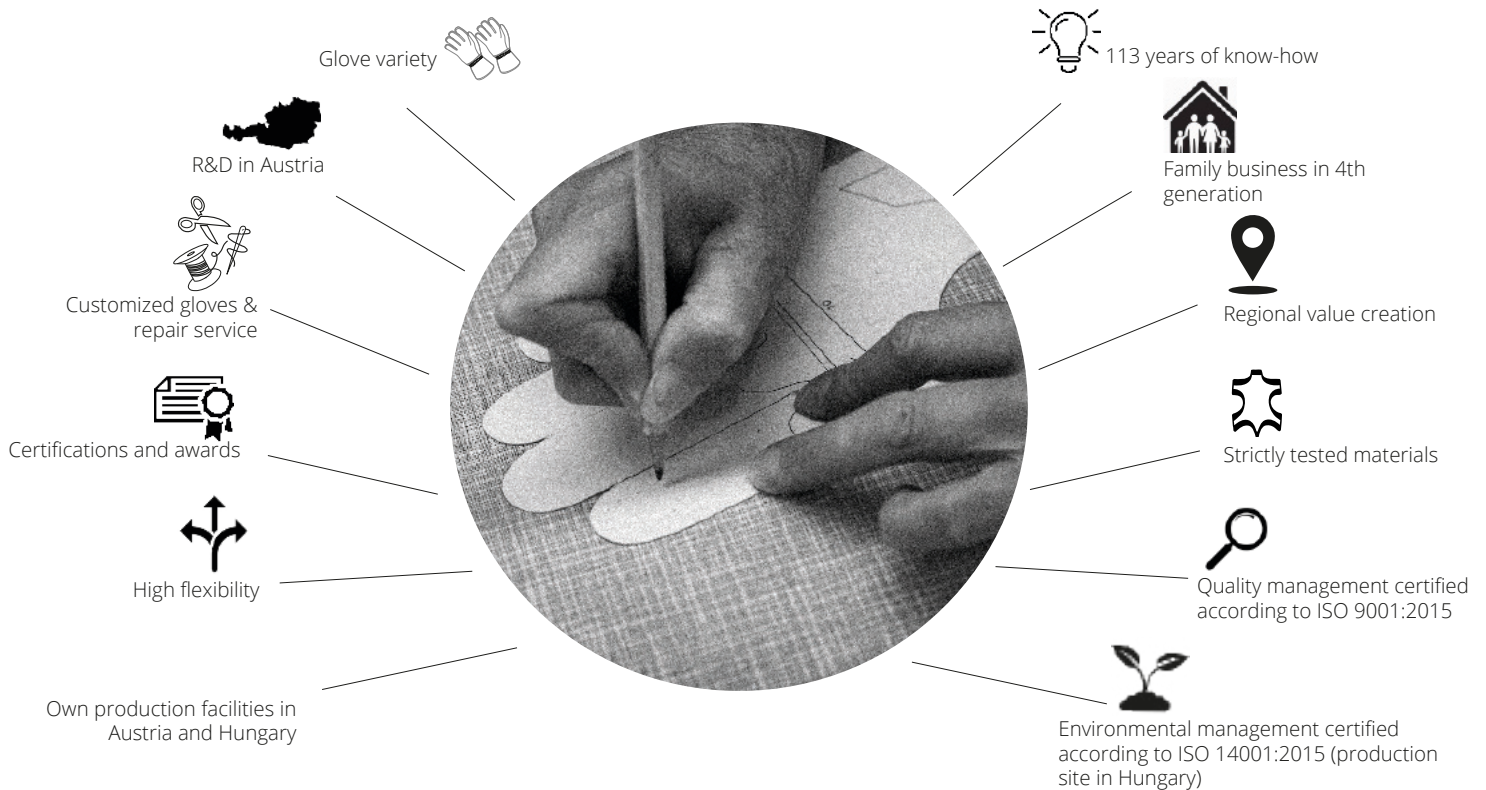
“

*The protection of your hands
has top priority for us and will
never be left to chance.
left to chance.*

- Paul Herbert Loos -



OUR HANDWRITING SINCE 1912.



ABOUT ESKA

Founded in 1912, we have been producing gloves exclusively for more than 110 years. Due to this long experience, we have become the absolute specialist with the highest technical know-how in the production of gloves. The company is already in its fourth generation as a family business. Paul Loosen is a trained glove maker and master glove maker, his daughter Regina is also a trained glove maker and his son Paul Jun is the managing director.

Our credo is to offer adequate and thus best possible protection to the most elementary and valuable of all executive instruments of the human mind - the hand. Optimum tactility, fit and wearing comfort are just as unalterably part of the company standards as the use of specific and high-quality materials. ESKA has been involved in the development of gloves for the military and police since the company was founded. From the very beginning we have been working intensively on highly technical developments.

We have the expert human resources, production resources and also external resources such as close cooperation and development partnerships with material suppliers to meet your requirements. We also set new standards in this sector and drive developments with a high degree of innovation. All gloves can be modified in cut technic, shape, material composition and design according to the individual customer requirements.



QUALITY FROM AUSTRIA

The company headquarters in Thalheim, Austria is the hub for administration and all logistics. In addition to a small series and sample production, the internal research and development department is also located in Wels. All raw materials are delivered and checked in Thalheim before further processing. All products undergo strict quality controls. Quality management is certified according to ISO 9001:2015. To ensure safety-relevant factors, additional tests are carried out in independent, accredited laboratories.

Ongoing internal and external controls guarantee compliance with all standards and the perfection of all products. All our own production facilities and partner companies in Hungary employ trained glove makers and specialized seamstresses throughout. Our production in Hungary is certified according to ISO 9001:2015 quality commitment, ISO 14001:2015 environmental management and NATO quality standard AQAP 2120.

Through innovative working methods and expert knowledge, in combination with the world's best raw materials from renowned manufacturers, we produce gloves that are unique in the world market.

The goal is to find a perfect solution for every technical problem. In cooperation with our suppliers we are constantly searching for innovative materials to develop new, trend-setting gloves.



TRY IT. WEAR IT. (G)LOVE IT.

Customers on all six continents trust ESKA® to protect their hands under the toughest operating conditions. The close and long-standing cooperation with this worldwide network of professional customers is both an incentive and a challenge every day to jointly develop the best products in each case. It is not without reason that customers appreciate the flexibility, loyalty, innovative strength, reliability and premium quality of ESKA®.

REFERENCES ALL AROUND THE GLOVE



Military

Austrian Army:	Combat gloves, cold weather mitten-/glove combination, anti-riot gloves
-----------------------	---

Bundeswehr Germany:	KBS SK glove system: Glove combat, cold & wet weather protection mitten, cold & wet weather protection glove, contact glove; sniper glove system, camouflage overmitten
----------------------------	---

French Army:	Combat gloves, cold-wet protection system: glove, overmitten, mitaine, underglove, technical alpine glove
---------------------	---

Army Netherlands:	Anti-Riot gloves
--------------------------	------------------

Army Australia:	Combat gloves
------------------------	---------------

Military Slovenia:	Camouflage cold-wet protection mitten
---------------------------	---------------------------------------

Norwegian Airforce:	Pilot gloves with/without Gore-Tex insert
----------------------------	---

Royal Air Force, GB:	Pilot gloves with Gore-Tex insert
-----------------------------	-----------------------------------



Police

Police Austria:	Summer gloves, winter gloves, impact protection gloves
------------------------	--

Police NRW Germany:	Flame and cut resistant gloves
----------------------------	--------------------------------

Police Saxony Germany:	Flame and cut resistant gloves
-------------------------------	--------------------------------

Police & Gendarmerie France:	Anti-Riot gloves, windstopper gloves, winter gloves, pilot gloves, cut resistant gloves
---	---

Police Netherlands:	Anti-Riot protection gloves, riding gloves with impact protection, dog-holder gloves
----------------------------	--



Others

Austrian Federal Railways:	Ladies and men's winter gloves
-----------------------------------	--------------------------------

Fire departments national & international:	Fire fighter gloves, technical rescue gloves
---	--

Sports trade national & international:	Winter gloves, outdoor gloves, cycling gloves
---	---



HIGHLIGHTS

Discover our glove highlights: For precision, durability and first-class protection for even the most demanding missions.

TITAN

The TITAN is the perfect evolution of the tried-and-tested THOR series and offers protection, comfort and precision even under the most adverse conditions. Its cut-resistant Kevlar® lining protects the entire hand from mechanical hazards, while the reinforced digital leather palm ensures maximum grip. All fingers and thumbs are touchscreen-compatible and the donning aid and pulse guard are additionally equipped with a leather eyelet to secure the gloves.

MATERIALS



Backhand:

- Interlock knitted fabric
- Kermel®, Lenzing ViscoseFR™
- Hydrophobic treatment
- Cut resistant interlock knit with Kevlar™ and glass fibers



Palm:

- Goat leather WR with touch function



Lining:

- Cut resistant interlock knit with Kevlar™ and glass fibers

CERTIFICATIONS

EN 388:2016



3 4 4 3 D P

EN 407:2020



4 X X X X

FEATURES

The full palm is made of soft touch goat leather WR for an excellent grip and unrestricted use of smart devices and touch displays with all fingers/thumbs

Tight ergonomic cut adapted to the natural position of the hand, with fabric gussets for superior fitting and dexterity



Reinforcement made of grip digital leather

Patch made of memory foam covered by coated aramide knitting as additional protection for the handball

Metal-free leather eyelet serves as a donning aid and pulse protection. It also offers the option of attaching the glove using a carabiner

Anti-loose leash (not pictured) for a secure hold on the hand, glove stays connected to the wearers hand



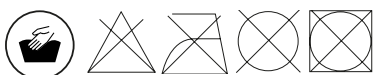
Fingertip reinforcement for additional protection against abrasion

Finger knuckle protection for additional safety and flexibility

D3O® Knuckle protector for optimum impact and shock protection

Short and tight cuff, belt with hook and loop closure system for width regulation system

CARE INSTRUCTIONS



SIZES

XS	S	M	L	XL	XXL	3XL
6	7	8	9	10	11	12

TECHNOLOGIES



THOR II

The THOR II offers the combination of protection and tactility familiar from the THOR series. The Kevlar® knit with glass fibres provides antibacterial cut protection, the Grip digital leather in the palm ensures ideal grip and touchscreen technology on the index finger enables the use of smart devices. An optimised finger construction and adapted knuckle protectors provide even more comfort and tactility for the emergency services.

MATERIALS



Backhand:

- Interlock knitted fabric
- Kermel®, Lenzing ViscoseFR™
- Hydrophobic treatment



Palm:

- Goat leather WR



Lining:

- Cut resistant interlock knit with Kevlar™ and glass fibers

CERTIFICATIONS

EN 388:2016



3 5 3 2 C P

EN 407:2020



4 X X X X

COLOR VARIATIONS



005 Black



032 Tan



713 Stonegrey/Olive

FEATURES

Touch technology on the index finger for unrestricted usage of touchscreens and smart devices

Tight ergonomic cut adapted to the natural position of the hand, with fabric gussets for superior fitting and dexterity



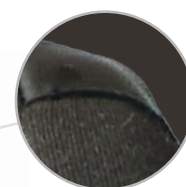
The entire palm is made of soft goatskin WR for excellent grip and tactile sensation

Reinforcement made of non-slip digital leather

Memory foam patch covered with coated aramid knit for extra handball protection

Donning aid and pulse protector

Finger knuckle protectors for extra protection



Reinforced finger tips protect against abrasion

D3O® Knuckle protector for optimum impact and shock protection

Anti-loose leash (not pictured) for a secure hold on the hand.

Short and tight cuff, belt with velcro for width adjustment

All used materials are flame retardant (according to EN 407, flame behaviour level 4)

CARE INSTRUCTIONS



SIZES

XS	S	M	L	XL	XXL	3XL
6	7	8	9	10	11	12

TECHNOLOGIES



THOR I

The THOR I is a universal tactical glove that combines protection and tactility. Its cut-resistant Kevlar® knit with glass fibres protects the palm together with additional reinforcements, while the digital leather ensures optimum grip. Knuckle protectors and D3O padding offer additional protection without restricting mobility. The touch technology on the index finger also allows the use of digital devices.

MATERIALS



Backhand:

- Interlock knitted fabric
- Nomex™
- Hydrophobic treatment



Palm:

- Goat leather WR



Lining:

- Cut resistant interlock knit with Kevlar™ and glass fibers

CERTIFICATES

EN 388:2016



3 5 3 2 C P

EN 407:2020



4 X X X X

COLOR VARIANTS



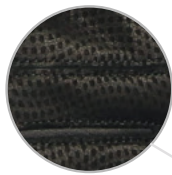
■ 005 Black

■ 032 Tan

FEATURES

Tight ergonomic cut adapted to the natural position of the hand, with fabric gussets for superior fitting and dexterity

The index finger provides a touch technology for unrestricted usage of touchscreens and smart devices



The entire palm is made of soft goatskin WR for excellent grip and tactile sensation

Reinforcement made of non-slip digital leather

Memory foam patch covered with coated aramid knit for extra handball protection

Donning aid and pulse protector



Finger knuckle protectors for extra protection



Reinforced finger tips protect against abrasion

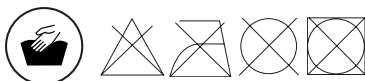
D3O knuckle protector for optimum impact and shock protection

Anti-loose leash (not pictured) for a secure hold on the hand.

Short and tight cuff, belt with velcro for width adjustment

All used materials are flame retardant (according to EN 407, flame behaviour level 4)

CARE INSTRUCTIONS



SIZES

XS	S	M	L	XL	XXL	3XL
6	7	8	9	10	11	12

TECHNOLOGIES



VADER

The VADER was developed for maximum tactility and manoeuvrability without having to sacrifice protection. Its cut-resistant para-aramid lining in the palm protects against sharp objects and abrasion, while the soft-touch Amara ensures optimum grip and tactile sensitivity. A silicone print in the palm additionally improves slip resistance and increases grip. The box finger construction in combination with soft-touch Amara in the palm ensures ideal operability of smart devices.

MATERIALS



Backhand:

- Spandex (polyester)



Palm:

- Soft touch Amara
- Conductive for the unrestricted use of touch devices



Lining:

- Anti-cut lining made of para-aramide, polyester and glass fibers

CERTIFICATIONS

EN 388:2016



3 4 3 2 C P

EN 407:2020



X 1 X X X X

COLOR VARIATIONS



005 Black

016 Green

032 Tan

713 Stonegrey/Oliv

FEATURES

Soft touch amara to ensure unrestricted use of smart devices and touch displays with all fingers/thumbs



Silicone print in the palm for an excellent grip

Tight ergonomic cut adapted to the natural position of the hand, box finger construction with gussets for superior fitting and dexterity

Eyelet for the pairing of gloves and fixation on garments with carabiner



Moving wrinkle on the index finger for more flexible movement of the trigger finger

Palm made of conductive amara

Pulse protection palmside with anti-cut lining inside the cuff

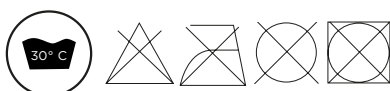


Fingertip reinforcement for additional protection against abrasion

Flexible and ergonomic back-hand protector
ISO 13594 impact protection certified (Impact protection EN388:2016 passed - P)

Tight cuff with belt for excellent hold and width regulation

CARE INSTRUCTIONS



SIZES

XXS	XS	S	M	L	XL	XXL	3XL
5	6	7	8	9	10	11	12

TECHNOLOGIES



SPARTACUS

The SPARTACUS is lightweight, flexible and hard-wearing - the ideal lightweight tactical glove. Its close fit and maximum dexterity are particularly impressive. The silicone print on the palm ensures excellent grip and the soft-touch Amara ensures unrestricted and intuitive use of smart devices and touch displays. The aramid backhand protects against sparks, hot shells and pyrotechnic secondary influences, while the foam patch in the knuckle area protects against mechanical stresses.

MATERIALS



Backhand:

- Knitted Interlock fabric
- 100% aramide



Lining:

- Unlined



Palm:

- Soft touch Amara
- Conductive for the unrestricted use of touch devices

CERTIFICATES

EN 388:2016



2 1 2 1 X

EN 407:2020



X 1 X X X X

COLOR VARIATIONS



005 Black



016 Green



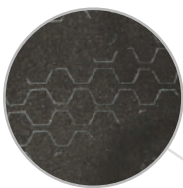
032 Coyote



713 Stonegrey/Oliv

FEATURES

Soft touch amara to ensure unrestricted use of smart devices and touch displays with all fingers/thumbs



Silicone print in the palm ensures excellent grip

Tight ergonomic cut adapted to the natural position of the hand, box finger construction with gussets for superior fitting and dexterity

Hole eyelet for fixation of the glove with a carabiner

Donning aid



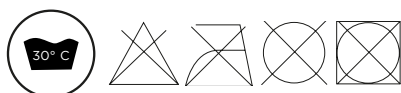
Moving wrinkle on the index finger for more flexible movement of the trigger finger

Patch made of 3mm foam, covered by abrasion resistant amara for extra protection of the backhand

Backhand and gussets are made of knitted meta-aramide

Short and tight cuff without any disturbing belt
Flexible, welded cuff end for easy donning

CARE INSTRUCTIONS



SIZES

XS	S	M	L	XL	XXL	3XL
6	7	8	9	10	11	12

TECHNOLOGIES



ODYN

The ODYN tactical glove specialises in maximum protection and safety. Its cut-resistant Kevlar® lining protects the hands from mechanical and thermal risks. The hydrophobised calfskin palm provides a non-slip grip, while flexible finger protectors with abrasion-resistant leather coating offer additional protection against impacts. A flexible backhand guard made of memory foam with certified impact protection improves safety in the event of impact. The entire backhand and the main part of the palm are made of flame-retardant calfskin.

MATERIALS



Backhand:

- Calf leather WR
- Flame retardent



Palm:

- Calf leather WR
- Flame retardent



Lining:

- Cut resistant interlock knit with Kevlar™ and glass fibers

CERTIFICATES

EN 388:2016



3 X 4 3 E P

EN 407:2020



4 X X X X X

FEATURES

Fingers palmside are made of grip digital leather for extra grip

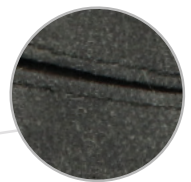
Reinforcement is made of soft and flame retardent calf leather

The entire backhand and main part of the palm is made of soft and flame retardent calf leather WR for excellent all around protection against thermal and mechanical risks

Tight ergonomic cut adapted to the natural position of the hand, with gussets for superior fitting and dexterity.



Flexible finger protectors with foam layers covered with abrasion resistant leather



Flexible backhand protection made of FR memory foam ISO 13594 impact protection certified covered with abrasion resistant coated aramide knitting

Belt with hook and loop closure system for width regulation

CARE INSTRUCTIONS



SIZES

XXS	XS	S	M	L/S	M
6	6 1/2	7	7 1/2	8	8 1/2
L	XL	XXL	3XL	4XL	5XL
9	9 1/2	10	10 1/2	11	12

TECHNOLOGIES



ANTI-CUT

The cut protection glove is made of supple, robust goatskin and has padded reinforcements on the palm. The adjustable leather belt ensures a secure grip. Elasticated inserts in the palm ensure a comfortable fit, while the extended pulse area offers additional protection. The ergonomic design and English thumb construction maintain full dexterity and a high level of comfort.

CERTIFICATIONS

EN 388:2016



4 5 4 2 F

MATERIALS



Backhand:

- Goat leather WR



Palm:

- Goat leather WR



Lining:

- Anti-cut lining made of para-aramide, polyester and glass fibers

FEATURES



Double elastic palmside for comfortable hold on the wearer's hand

Tight ergonomic cut with gussets, adapted to the natural position of the hand

Cover and protection of the wrist (anti-cut lining up to the cuff end)



Classic decoration stitches on the backhand for a classical look

English thumb construction for excellent movement

CARE INSTRUCTIONS



SIZES

XS	S	M	L	XL	XXL	3XL
6	7	8	9	10	11	12

TECHNOLOGIES



eska®

GLOVE REVOLUTION SINCE 1912



**JOIN THE
GLOVE
REVOLUTION!**

 @eskagloves_tactical

TRY IT. WEAR IT. (G)LOVE IT.

ALPHA SUMMER

The highly tactile ALPHA allrounder glove has a specially developed thumb trim and patented finger cap covers. The glove is permanently windproof and water-repellent thanks to the WINDSTOPPER® by GORE-TEX Labs material. The touchscreen technology on the index finger, middle finger and thumb enables unrestricted operation of smart devices.

CERTIFICATES

EN 388:2016



2 1 2 1

MATERIALS



Backhand:

- Windproof and water repellent 3-layer WINDSTOPPER® by GORE-TEX Labs fabric



Palm:

- Goat leather WR



Lining:

- Unlined

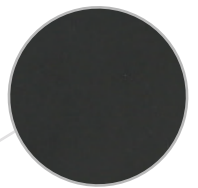
FEATURES



Full leather palm

Touch leather on the thumb, index finger and middle finger for unrestricted use of smart devices and touch displays

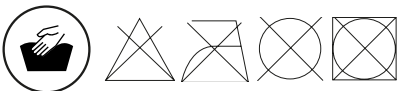
Specifically developed RRM thumb cap



3-layer WINDSTOPPER® fabric

Elastic band on wrist for perfect hold

CARE INSTRUCTIONS



SIZES

XXS	XS	S	M	L/S	M
6	6 1/2	7	7 1/2	8	8 1/2
L	XL	XXL	3XL	4XL	5XL
9	9 1/2	10	10 1/2	11	12

TECHNOLOGIES



DELTA WINTER

The classic DELTA tactical glove is made from supple, robust goatskin and a warm, anti-bacterial fleece lining. The touchscreen technology on the index finger makes it easy to operate smart device displays and the patented finger cap coating ensures maximum sensitivity.





CERTIFICATES

EN 388:2016



2 1 2 1

MATERIALS

- | | | | |
|--|---|--|---|
|  Backhand:
<ul style="list-style-type: none"> Goat leather WR |  Palm:
<ul style="list-style-type: none"> Goat leather WR |  Lining:
<ul style="list-style-type: none"> SK Ionix fleece with silver fibers |  Insulation:
<ul style="list-style-type: none"> Lavalan® natural sheep-wool |
|--|---|--|---|

FEATURES

Forefingers and thumbs are made of conductive touch leather to ensure an unrestricted use of smart devices

Ergonomic cut adapted to the natural position of the hand, sewn in traditional English piqué seam with rolled-over fingertips for superior fitting and dexterity.

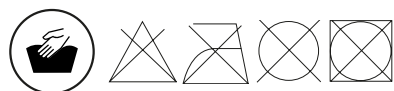
Rollled over fingertips for a superior sense of touch and dexterity

Excellent warmth, comfort and temperature management because of the natural Lavalan sheepwool insulation at the backhand and the silver fleece lining (SK IONIX)

The entire glove is made of soft goatskin WR for excellent grip and tactile sensation

Double elastic on backhand and palmside ensure secure hold on the wearer's hand

CARE INSTRUCTIONS



SIZES

XXS	XS	S	M	L/S	M
6	6 1/2	7	7 1/2	8	8 1/2
L	XL	XXL	3XL	4XL	5XL
9	9 1/2	10	10 1/2	11	12

TECHNOLOGIES



IKARUS 3 PILOT

The IKARUS 3 PILOT was specially developed for aviation use and enables pressure-free operation of devices under challenging environmental conditions. The palm is made of supple but robust goatskin and is equipped with touchscreen technology on all fingers and thumbs. The extended cuff protects the wrist and pulse area. The IKARUS 3 PILOT is also available in a lined version. In addition to the antistatic and antibacterial lining made of silver fibres, the pilot glove is waterproof and windproof thanks to the GORE-TEX insert.

MATERIALS



Backhand:

- Interlock knitted fabric Nomex™, Kevlar™



Palm:

- Goat leather WR conductive with touch function



Lining: (Only on 2943X/A Lined Version)

- SK Ionix Grip with silver fibers



Insert (Only on 2943X/A Lined Version)

- GORE-TEX® insert, based on ePTFE

FEATURES

Palm made of soft conductive touch leather for the unrestricted use of smart devices and touch devices with all fingers and thumbs

Tight ergonomic cut adapted to the natural position of the hand, sewn in traditional English piqué seam with rolled-over fingertips for superior fitting and dexterity.

ONLY 2943 X/A Lined Version:

Anti-static and anti-bacterial lining made with silver fibers



■ 005 Black ■ 713 Stonegrey/Olive

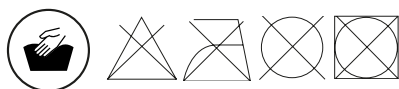


ONLY 2943 X/A Lined Version:

Durable, permanent waterproof, windproof and breathable insert, irremovably fixed according the patented unique technic of ESKA offering the best comfort and dexterity

Backhand made of flame-retardant Nomex® Kevlar® knitted fabric

CARE INSTRUCTIONS



SIZES

XXS	XS	S	M	L/S	M
6	6 1/2	7	7 1/2	8	8 1/2
L	XL	XXL	3XL	4XL	5XL
9	9 1/2	10	10 1/2	11	12



ONLY ON 2943X LINED VERSION:



TOWN TOUCH

The TOWN TOUCH is a breathable all-round glove. Its WINDSTOPPER® fabric from GORE-TEX LABS ensures windproofness and breathability, while the hydrophobised goatskin palm offers a non-slip grip. Soft fleece lining provides cosy warmth without restricting mobility. The touch technology on the thumb and index finger enables unrestricted operation of smart devices. An ergonomic cut with reinforcements in the danger zones of the thumb increases durability and comfort.

MATERIALS



Backhand:

- WINDSTOPPER® by GORE-TEX LABS



Palm:

- Goat leather WR



Lining:

- Soft and warm fleece lining

FEATURES

Full goat leather WR palm for an excellent grip and comfort

Ergonomic cut adapted to the natural position of the hand for a good fit

WINDSTOPPER® fabric technology by GORE-TEX LABS ensures that the glove is totally windproof, breathable and water repellent.



Thumb is reinforced with goat leather in the danger zones

Double elastic on back-hand and palmside ensure secure hold on the wearer's hand

CARE INSTRUCTIONS



SIZES

XXS	XS	S	M	L/S	M
6	6 1/2	7	7 1/2	8	8 1/2
L	XL	XXL	3XL	4XL	5XL
9	9 1/2	10	10 1/2	11	12

TECHNOLOGIES



ALLROUND TOUCH

This glove is not named Allround Touch for no reason. Its universal possibilities and the touchscreen technology make this glove a versatile tool during all missions.

MATERIALS



Backhand:

- Windstopper by GORE-TEX labs



Palm:

- Hydrophobic goat leather

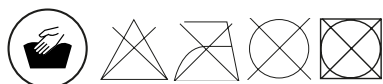
FEATURES

Touch technology on the thumb and index finger

Hydrophobic goat leather in the palm for optimised grip

Anti-loose leash (not pictured) for a secure hold on the hand, the gloves stays fastened to the wearers hand

CARE INSTRUCTIONS



SIZES

XXS	XS	S	M	L/S	M
6	6 1/2	7	7 1/2	8	8 1/2
L	XL	XXL	3XL	4XL	5XL
9	9 1/2	10	10 1/2	11	12

TECHNOLOGIES








LOKI

The removable fist cap of the LOKI in combination with the cut-off fingertips of the LOKI combines the best of both worlds. Magnetically fixed, the fist cap enables quick adjustment for tactical operations and official tasks. The goatskin leather palm provides a secure grip, PrimaLoft® Gold for warmth and GORE-TEX Windstopper for windproof protection. A robust, versatile glove with high durability and comfort.

The LOKI can be used on its own or as an additional overglove over other models to further increase protection against the cold - especially for static applications in extreme temperatures.

MATERIALS

 Backhand: <ul style="list-style-type: none"> • Windstopper by GORE-TEX Labs 	 Palm: <ul style="list-style-type: none"> • Goat leather WR
 Insulation (Mittencap): <ul style="list-style-type: none"> • PrimaLoft® Gold Insulation (100% recycled) 	 Lining: <ul style="list-style-type: none"> • TT2

COLOR VARIATIONS

 005 Black
 713 Stonegrey/Olive

FEATURES

Cut-off fingertips for maximum tactility

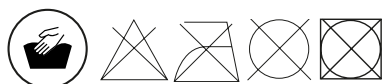
Water-repellent goat leather ensures excellent grip and durability

Knitted cuff for optimum grip on the wrist ensures a perfect finish with the jacket sleeve

Anti-loose leash (not pictured) for a secure hold on the hand, the gloves stays fastened to the wearers hand

Magnet to secure the mitten cap

CARE INSTRUCTIONS



SIZES

XXS	XS	S	M	L/S	M
6	6 1/2	7	7 1/2	8	8 1/2
L	XL	XXL	3XL	4XL	5XL
9	9 1/2	10	10 1/2	11	12

TECHNOLOGIES



INDIVIDUAL OPERATIONS AND REQUIREMENTS.

**DEXTERITY AND COMFORT.
FOR EVERY CHALLENGE.
FOR EVERY SITUATION.**

UNCOMPROMISED HAND PROTECTION.



COMPANION

Light, stretchy and breathable. The COMPANION stays true to his name. It knows a wide range of applications and will accompany you on every mission.

COLOR VARIATIONS



■ 005 Black ■ 713 Stonegrey/Olive

MATERIALS



Backhand:

• Multistretch Premium



Palm:

• Multistretch Premium

FEATURES

Touch technology on the thumb and index finger

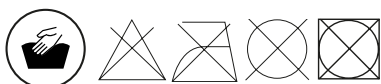


Anti-loose leash (not pictured) for a secure hold on the hand, the gloves stays fastened to the wearers hand

Light and breathable multistretch material



CARE INSTRUCTIONS



SIZES

XS	S	M	L	XL	XXL	3XL
6	7	8	9	10	11	12

TECHNOLOGIES



BREATHABLE

SHELTER

The SHELTER is a real all-rounder. There is hardly any outdoor activity for which the SHELTER is not suitable. The thin glove is designed to provide ideal warmth, the water-proof insert keeps your hands nice and dry while staying breathable.

COLOR VARIATIONS



■ 005 Black ■ 713 Stonegrey/Olive

MATERIALS



Backhand:

- Softshell



Palm:

- Digital leather (goat leather)



Insert:

- SK Shield



Lining:

- SK Softplush

FEATURES

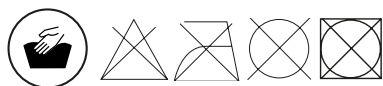
Touch technology on the thumb and index finger

Digital goatskin leather inner glove for optimised grip

Anti-loose leash (not pictured) for a secure hold on the hand, the gloves stays fastened to the wearers hand

Waterproof and breathable insert

CARE INSTRUCTIONS



SIZES

XXS	XS	S	M	L/S	M
6	6 1/2	7	7 1/2	8	8 1/2
L	XL	XXL	3XL	4XL	5XL
9	9 1/2	10	10 1/2	11	12

TECHNOLOGIES



100% WATERPROOF



100% WINDPROOF



BREATHABLE

ARKTIS LITE

The ARKTIS LITE - optimised for tactical use! A glove with a removable inner glove enables ideal adaptation to any challenge. By dispensing with an insert in the inner glove, it offers improved grip. In addition, the mitten shell can be completely removed so that the inner glove can also be worn separately - maximum flexibility for every area of use. The mitten cap can be easily secured to the outer hand with a magnet. The closure of the mitten cap is equipped with a waterproof zip.

MATERIALS OUTER MITTEN (SHELL)



Backhand | Cuff:

- Softstretch



Palm:

- Soft goat leather WR



Insulation:

- PrimaLoft® Gold Insulation + Cross Core



Lining:

- TT2

FEATURES OUTER MITTEN (SHELL)

Leather mitten cap without irritating seams on the fingertips

PrimaLoft® Insulation with Cross Core Technology 30 % warmer than PrimaLoft® Gold Insulation

Magnet to secure the mitten cap

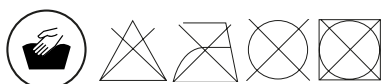
Soft, hydrophobised goat leather on the palm for a secure grip

Fastening the mitten cap with a waterproof zip

Wide cuff for wearing over a jacket

Dressing aid for quick donning and doffing

CARE INSTRUCTIONS



SIZES

XXS	XS	S	M	L/S	M
6	6 1/2	7	7 1/2	8	8 1/2
L	XL	XXL	3XL	4XL	5XL
9	9 1/2	10	10 1/2	11	12

TECHNOLOGIES OUTER MITTEN (SHELL)



CROSSXCORE™

ARKTIS LITE

MATERIALS INNER GLOVE



Backhand:

- Softshell



Palm:

- Digital grip goat leather WR



Insulation:

- Windstopper by GORE-TEX Labs

FEATURES INNER GLOVE



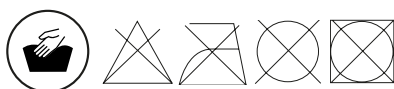
Fully removable inner glove made of wind-proof softshell with Windstopper by GORE-TEX Labs lining



Touch technology on the thumb and index finger

Digital goatskin leather palm for optimised grip

CARE INSTRUCTIONS



SIZES

XXS	XS	S	M	L/S	M
6	6 1/2	7	7 1/2	8	8 1/2
L	XL	XXL	3XL	4XL	5XL
9	9 1/2	10	10 1/2	11	12

TECHNOLOGIES INNER GLOVE:



A full-page background image featuring three police officers in tactical gear. The officer in the center is wearing a helmet with a clear visor and a microphone, looking directly at the camera. He has a "POLICE" patch on his vest. To his left, another officer is partially visible, also in gear. To his right, a third officer is visible, wearing a helmet with multiple attachments. The setting appears to be an indoor training facility or a simulated environment with industrial-looking structures.

eska[®]

GLOVE REVOLUTION SINCE 1912

TRY IT. WEAR IT. (G)LOVE IT.



eska®

GLOVE REVOLUTION SINCE 1912



ESKA AUSTRALIA

p 1300 717 117

www.eskaaustralia.com.au | sales@eskaus.com.au